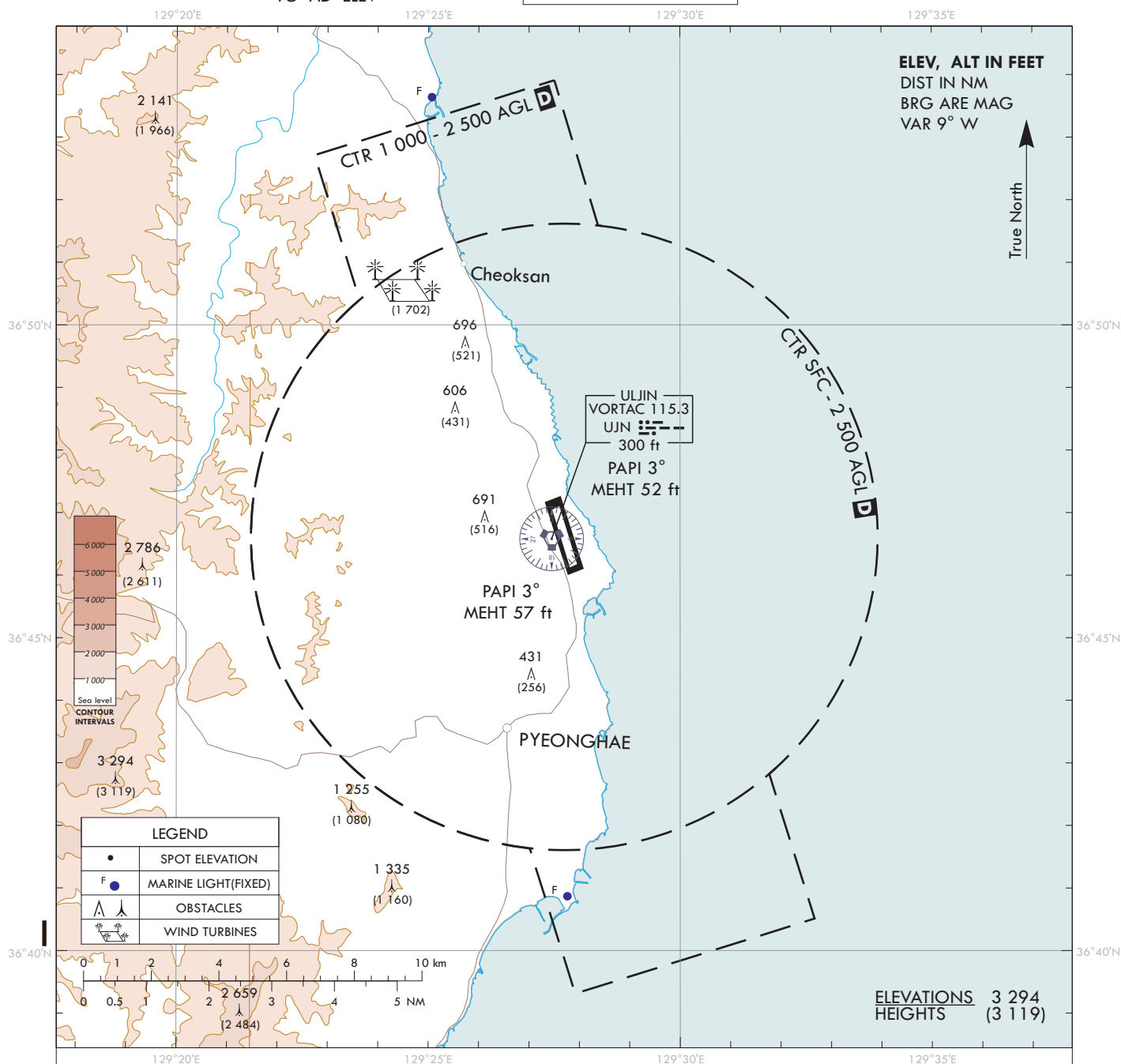


**VISUAL
APPROACH
CHART - ICAO**

AD ELEV **175 ft**
HEIGHTS RELATED
TO AD ELEV

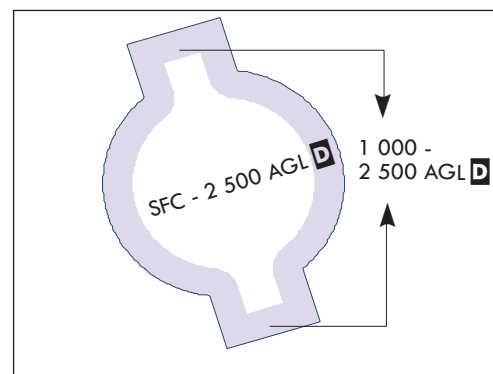
ULJIN	ARR	120.875
		317.65
ULJIN	TWR	118.55

ULJIN/Uljin



VISUAL APPROACH PROCEDURE

- Visual approach may be initiated by ATC or approved upon pilot request on traffic permitting basis when :
 - Ceiling : At or above 500 ft plus MVA
 - Visibility : Not less than 5 km
- ATS airspace : Class D (Refer to ENR 2.1-10)



Change : Establishment of wind turbines for legend.